

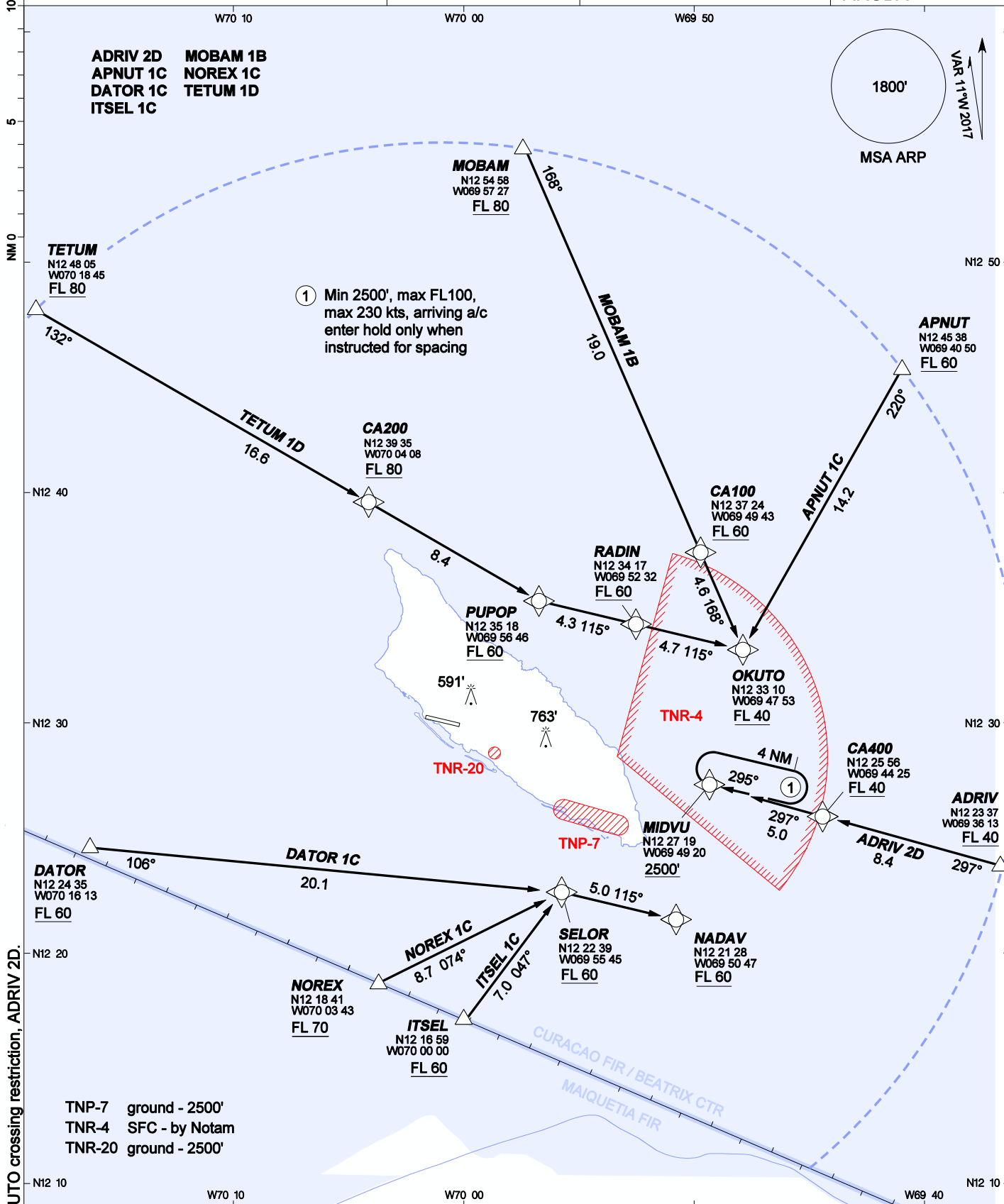
AIP DUTCH CARIBBEAN

RNAV (GNSS) ARRIVALS RWY 29  
INSTRUMENT - ICAO

AD ELEVATION: 62'  
TRANS LEVEL: FL 40  
TRANS ALT: 2500' (2438')

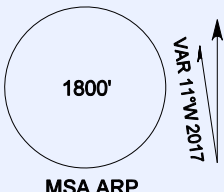
BEATRIX:  
APP/TWR 120.9 GND 118.0  
APRON 121.6 ATIS 132.1

REINA BEATRIX  
INT'L (TNCA)  
ARUBA



① Min 2500', max FL100,  
max 230 kts, arriving a/c  
enter hold only when  
instructed for spacing

ADRV 2D MOBAM 1B  
APNUT 1C NOREX 1C  
DATOR 1C TETUM 1D  
ITSEL 1C



CHANGES: NADAV and OKUTO crossing restriction, ADRV 2D.

TNP-7 ground - 2500'  
TNR-4 SFC - by Notam  
TNR-20 ground - 2500'

1. RNP-1 or RNAV-1 required.
2. TNR-4 is not active during Rwy 29 operations.
3. A request for the RNAV (GNSS) Rwy 29 approach should be made on first contact with ATC.

